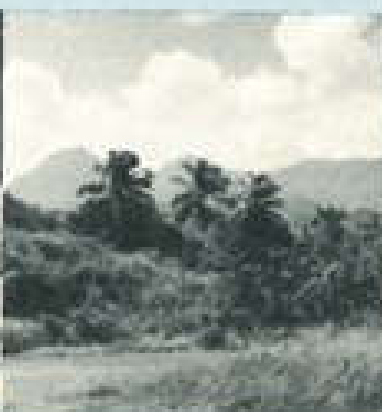


MONTSERRAT VP2MFL

WEST INDIES



VP2MFL

Montserrat Island, West Indies, being isolated from the continents (62° N/16° W), and very tiny (10km x 6km), is very rugged and mountainous. This beautiful isle of the Leeward group is covered with forest and tropical vegetation. Common are exotic birds and iguana, a constant warm temperature and cooling trade winds. The native "mountain chicken", a terrestrial frog, grows up to ten inches and is gourmet eating. The hospitality of Montserratians is its greatest attraction, people proud of their heritage.

Amateur Radio Station YU4FDE
confirming 2X QSO.

DATE	MHZ	SIG REPORT	
		CW	SSB
24/9/81	14	599	
	21		
	28		

Thank you for the QSO

Donald Simmonds
Box 999
Springtown, Texas 76082
U.S.A.

QSL direct/bureau via K5B0X

My sincere appreciation to Isle and Doc (VP2MF) Hollatz and Perry (W5STI) who made this trip possible, thank you.